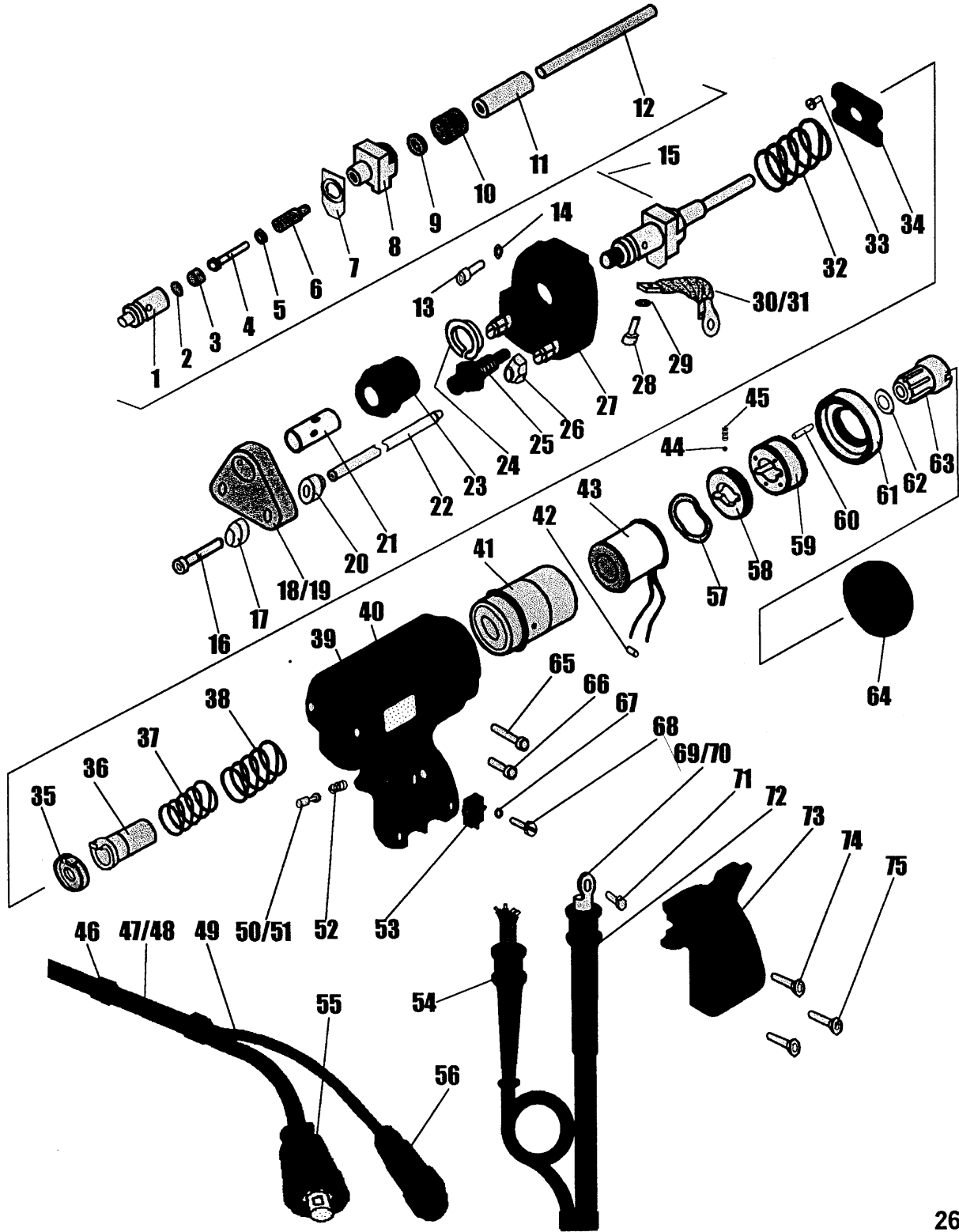


DA1 & DA2 PISTOL EXPLOSION



DA1 & DA2 PISTOL PARTS LIST

ITEM	No. OFF	PART NUMBER	ITEM DESCRIPTION.
1	1	81-101-064	SHAFT ADAPTER
2	1	81-101-065	INSULATOR
3	1	81-101-066	INSULATOR
4	1	Z100-05-025	SHAFT SCREW
5	1	81-101-068	INSULATOR
6	1	81-101-069	INSULATOR
7	1	81-101-109	ACTUATOR PLATE
8	1	81-101-070	WELD SHAFT CONNECTOR BLOCK
9	1	81-101-071	INSULATOR
10	1	81-101-072	INSULATOR
11	1	81-101-073	LIFTING SLEEVE
12	1	81-101-106	WELDSHAFT GUIDE ROD
13	2	Z100-05-025	FRONT END CAP SCREW
14	2	Z615-05-000	SPRING WASHER
15	1	81-101-080	WELDSHAFT COMPLETE (ITEMS 1 TO 11)
16	2	Z105-05-035	FOOT ASSEMBLY SCREW
17	2	81-101-003	FOOT WASHER
18	1	81-101-002	FOOT ADAPTER (M3 TO M12)
19	1	81-101-063	FOOT ADAPTER M16 TO M20) DA2 ONLY
20	2	81-101-001	FOOT WASHER
21	1	81-101-005	TAPER CHUCK GRIP
22	2	81-101-004	STANDARD EXTENDED LEG
23	1	81-101-006	DUST PROTECTION BELLOWS
24	1	81-101-007	LOW FRICTION BEARING BUSH
25	1	81-101-107	DAMPER (DAMPED PISTOL)
25	1	81-101-108	BLANKING PLUG (UNDAMPED PISTOL)
26	2	81-101-077	LEG LOCKING NUT
27	1	81-101-010	FRONT END CAP ASSEMBLY
28	1	Z200-04-010	FLEXIBRAID FIXING SCREW
29	1	Z615-04-000	SPRING WASHER

DA1 & DA2 PISTOL PARTS LIST

ITEM	No. OFF	PART NUMBER	ITEM DESCRIPTION.
30	1	81-101-061	FLEXIBRAID (DA1 ONLY)
31	1	81-101-028	FLEXIBRAID (DA2 ONLY)
32	1	81-101-012	MAIN RETURN SPRING
33	4	Z220-04-008	RETAINING PLATE SCREW
34	1	81-101-014	RETAINING PLATE
35	1	81-101-015	LIFTING RING
36	1	81-101-252	LIFTING HOOK ASSEMBLY
37	1	81-101-017	LIFTING HOOK RETURN SPRING
38	1	81-101-018	LIFTING RING RETURN SPRING
39	1	81-101-023	R.H. PISTOL BODY MOULDING
40	1	81-101-024	L.H. PISTOL BODY MOULDING
41	1	81-101-103	SOLENOID COIL HOUSING
42	2	71-101-007	ANTI-ROTATION PIN
43	1	81-101-038	SOLENOID COIL
44	1	81-101-082	DETENT BALL
45	1	81-101-083	DETENT BALL RETURN SPRING
46	10	71-101-032	CABLE TIE CLIP
47	5M	71-300-003	WELD CABLE (DA1 ONLY)
48	5M	71-300-004	WELD CABLE (DA2 ONLY)
49	5M	71-300-009	CONTROL CABLE
50	1	81-101-089	TRIGGER PUSH BUTTON ACTUATOR
51	1	81-101-125	TRIGGER PUSH BUTTON
52	1	81-101-030	PUSH BUTTON RETURN SPRING
53	1	81-101-031	TRIGGER MICROSWITCH
54	1	81-101-051	WELD CABLE PLUG
55	1	81-101-054	CONTROL CABLE SLEEVE
56	1	71-101-030	CONTROL CABLE PLUG (4 PIN)
57	1	81-101-039	WAVE SPRING WASHER
58	1	81-101-043	DETENT MECHANISM HOUSING
59	1	81-101-104	COIL / DETENT LOCKING RING
60	4	Z410-05-020	LOCKING RING GRUB SCREW

DA1 & DA2 PISTOL PARTS LIST

ITEM	No. OFF	PART NUMBER	ITEM DESCRIPTION.
61	1	81-101-102	BODY CLAMPING RING
62	1	81-101-161	MAGNETIC RELEASE SHIM WASHER
63	1	81-101-105	LIFT ADJUSTMENT BACKSTOP
64	1	81-101-101	REAR END CAP
65	1	Z100-04-025	PISTOL BODY SCREW (TOP)
66	1	Z100-04-020	PISTOL BODY SCREW (BOTTOM)
67	2	Z600-25-000	PLAIN WASHER
68	2	Z200-25-015	MICROSWITCH FIXING SCREW
69	1	Z700-06-S38	RING TERMINAL (DA1 ONLY)
70	1	Z700-06-060	RING TERMINAL (DA2 ONLY)
71	1	81-101-057	WELD CABLE FIXING SCREW
72	1	81-101-044	WELD CABLE SLEEVE
73	1	81-101-045	PISTOL HANDLE GRIP
74	1	Z120-05-025	PISTOL GRIP FIXING SCREW (TOP)
75	2	Z120-05-020	PISTOL GRIP FIXING SCREW (BOTTOM)