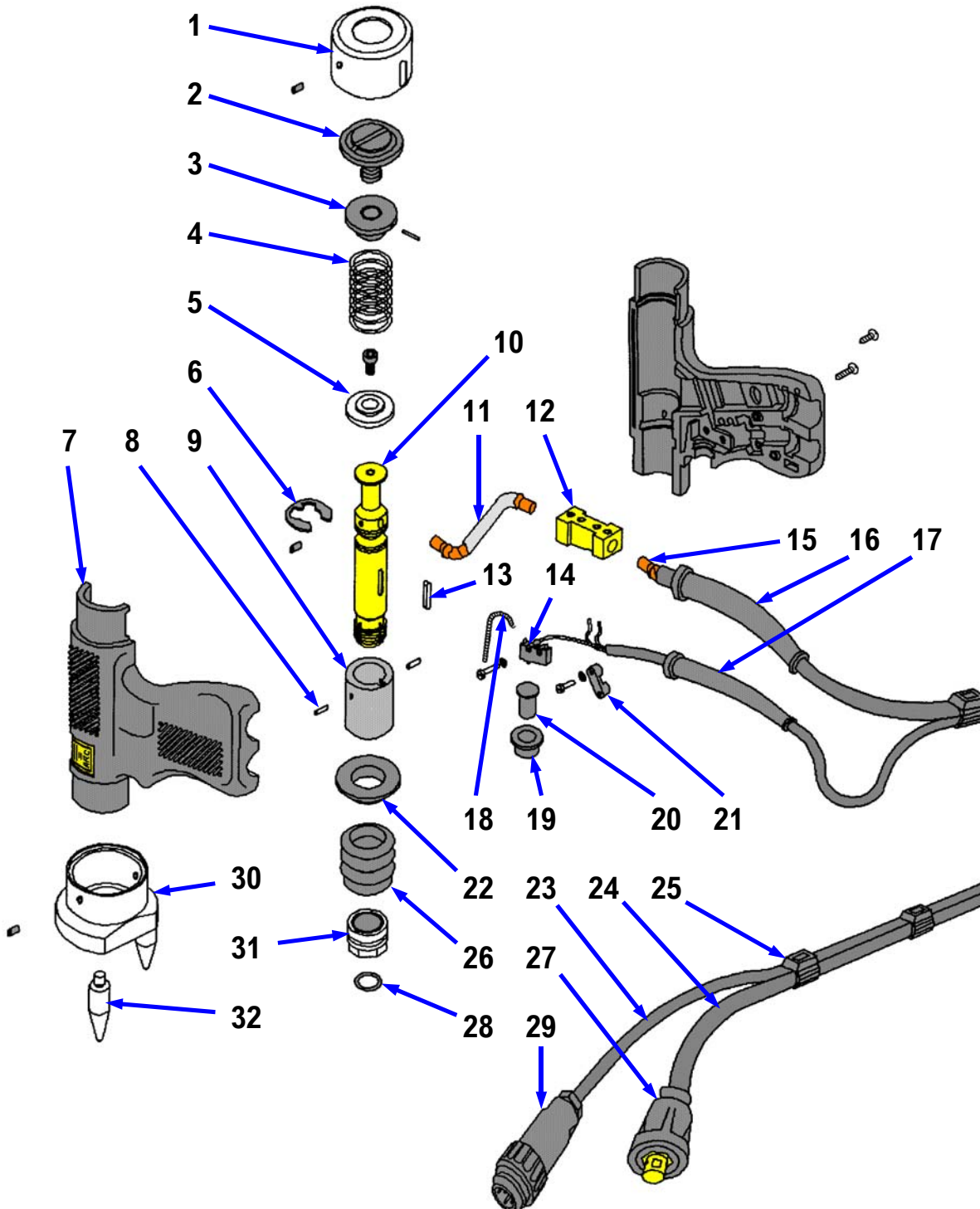


# COMPONENT EXPLOSION

## STANDARD CONTACT PISTOL.



# PARTS LIST

## STANDARD CONTACT PISTOL.

ITEM	QTY	PART No.	DESCRIPTION
1	1	71-101-018	REAR END CAP
2	1	71-101-017	SPRING PRELOAD ADJUSTOR
3	1	71-101-016	ADJUSTABLE SPRING SEAT
4	1	71-101-014	SPRING
5	1	71-101-012	FIXED SPRING SEAT
6	1	71-101-011	SHAFT CIRCLIP
7	1	71-101-005	PISTOL BODY MOULDING (2 PARTS)
8	2	71-101-007	DOWEL PIN
9	1	71-101-006	BEARING BUSH
10	1	71-101-008	WELDSHAFT
11	1	71-101-029	FLEXIBLE BRAID ASSEMBLY
12	1	71-101-038	CABLE SPLICING BLOCK
13	1	71-101-024	SHAFT KEY
14	1	71-101-028	TRIGGER MICRO SWITCH
15	1	71-101-042	COPPER FERRULE
16	1	71-101-034	WELD CABLE SUPPORT SLEEVE
17	1	71-101-033	CONTROL CABLE SUPPORT SLEEVE
18	1	71-101-009	SPRING CONTACT
19	1	71-101-036	TRIGGER BEZEL
20	1	71-101-035	TRIGGER PUSH BUTTON
21	1	71-101-027	CABLE SECURING CLIP
22	1	71-101-004	BELLOWS RETAINING RING
23	3.5	71-300-010	CONTROL CABLE (m)
24	3	71-300-002	WELD CABLE (m)
25	6	71-101-032	CABLE TIE CLIP
26	1	71-101-003	DUST PROTECTION BELLOWS
27	1	71-101-031	CABLE END WELD PLUG
28	1	71-101-001	“O” RING
29	1	71-101-030	CABLE END CONTROL PLUG
30	1	79-101-051	FRONT END CAP
31	1	71-101-002	CHUCK/COLLET NUT
32	3	79-101-052	TRIPOD LEG