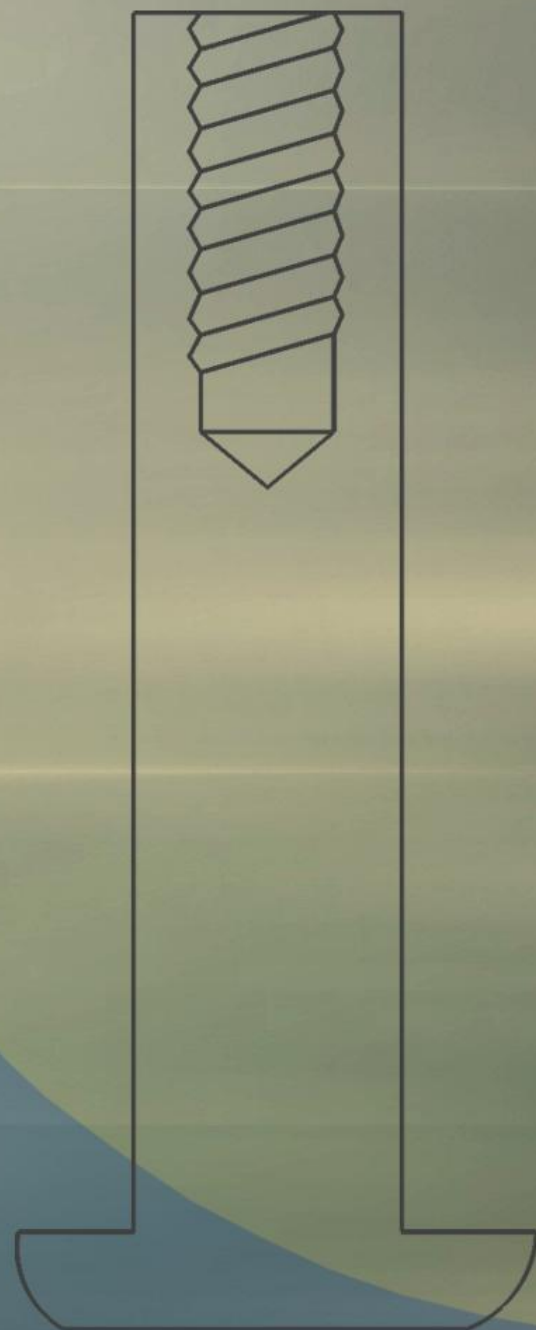
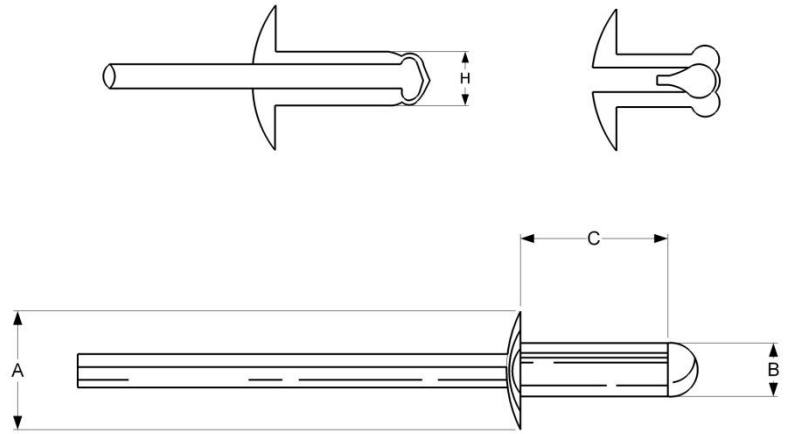


DABOTEK

KATALOG

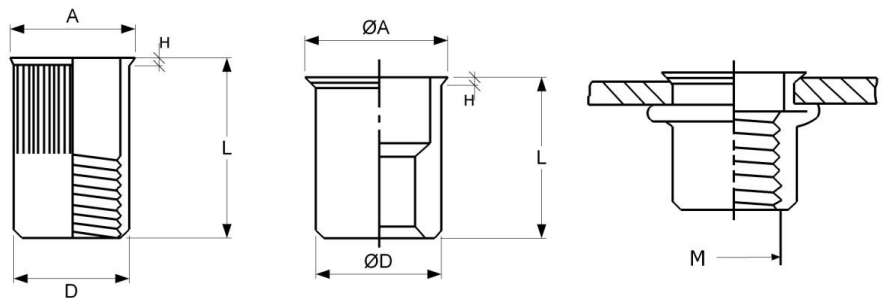


BLIND RIVETS SYSTEM



TS.AAS.	TS.SAS.	TS.SSAS.	TS.SSASS.	ITEM SIZE				
ALUMINUM RIVET STEEL SHAFT	STEEL RIVET STEEL SHAFT	STAINLESS STEEL RIVET STEEL SHAFT	STAINLESS STEEL RIVET STAINLESS STEEL SHAFT	A (HEAD DIA.)	B (BODY DIA.)	(INCH)	C (LENGTH)	(INCH)
TS.AAS 3-2	TS.SAS 3-2			4.5mm	2.4mm	3/32	5.80mm	.23
TS.AAS 3-3	TS.SAS 3-3		7.40mm				.30	
TS.AAS 3-4	TS.SAS 3-4		8.40mm				.33	
TS.AAS 4-1	TS.SAS 4-1	TS.SSAS 4-2	TS.SSASS 4-2	6.4mm	3.2mm	1/8	4.80mm	.19
TS.AAS 4-2	TS.SAS 4-2	TS.SSAS 4-3	TS.SSASS 4-3				6.40mm	.25
TS.AAS 4-3	TS.SAS 4-3	TS.SSAS 4-4	TS.SSASS 4-4				8.00mm	.315
TS.AAS 4-4	TS.SAS 4-4	TS.SSAS 4-5	TS.SSASS 4-5				9.60mm	.38
TS.AAS 4-5	TS.SAS 4-5	TS.SSAS 4-6	TS.SSASS 4-6				11.50mm	.45
TS.AAS 4-6	TS.SAS 4-6						12.70mm	.50
TS.AAS 4-8	TS.SAS 4-8						16.10mm	.63
TS.AAS 5-1	TS.SAS 5-1	TS.SSAS 5-2	TS.SSASS 5-2				8.0mm	4.0mm
TS.AAS 5-2	TS.SAS 5-2	TS.SSAS 5-3	TS.SSASS 5-3	7.00mm	.275			
TS.AAS 5-3	TS.SAS 5-3	TS.SSAS 5-4	TS.SSASS 5-4	8.50mm	.335			
TS.AAS 5-4	TS.SAS 5-4	TS.SSAS 5-5	TS.SSASS 5-5	10.00mm	.394			
TS.AAS 5-5	TS.SAS 5-5	TS.SSAS 5-6	TS.SSASS 5-6	11.40mm	.488			
TS.AAS 5-6	TS.SAS 5-6	TS.SSAS 5-8	TS.SSASS 5-8	13.00mm	.511			
TS.AAS 5-8	TS.SAS 5-8			16.50mm	.65			
TS.AAS 5-10	TS.SAS 5-10			19.50mm	.77			
TS.AAS 6-1	TS.SAS 6-1	TS.SSAS 6-2	TS.SSASS 6-2	9.0mm	4.8mm	3/16	6.40mm	.25
TS.AAS 6-2	TS.SAS 6-2						7.40mm	.30
TS.AAS 6-3	TS.SAS 6-3	TS.SSAS 6-4	TS.SSASS 6-4				9.60mm	.38
TS.AAS 6-4	TS.SAS 6-4						11.00mm	.44
TS.AAS 6-5	TS.SAS 6-5	TS.SSAS 6-6	TS.SSASS 6-6				12.70mm	.50
TS.AAS 6-6	TS.SAS 6-6	TS.SSAS 6-8	TS.SSASS 6-8				14.50mm	.57
TS.AAS 6-8	TS.SAS 6-8						17.50mm	.69
TS.AAS 6-10	TS.SAS 6-10						20.40mm	.80
TS.AAS 6-12	TS.SAS 6-12			24.00mm	.95			

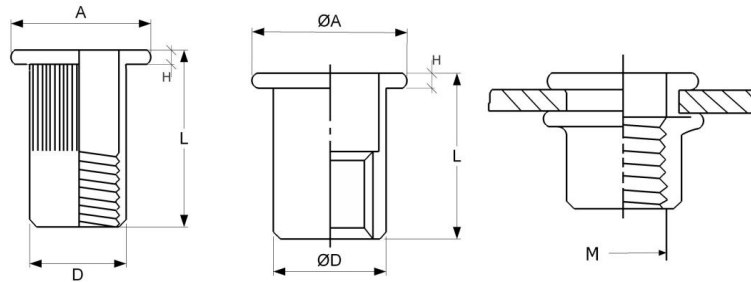
BLIND RIVET NUT



SMALL FLANGE BERYNUT, OPEN END

SEM, SAM, SAI SERIES

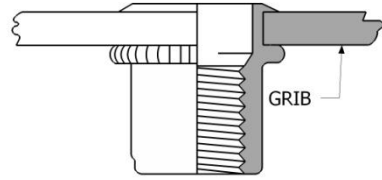
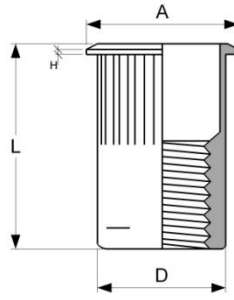
THREAD SIZE	PART NO.	HOLE SIZE +0.1/-0.0	D(mm) +0.0/-0.1	L(mm) ±0.4	A(mm) ±0.3	H(mm) +0.15/-0.05	GRIP RANGE
M3X0.5	SEM3	5.10	5.0	9.0	6.0	0.5	0.5-2.0
M4X0.7	SEM4/SEM4-K	6.10	6.0	10.0	7.0	0.5	0.5-2.5
M5X0.8	SEM5/SEM5-K	7.10	7.0	12.0	8.0	0.5	0.5-2.5
M6X1.0	SEM6/SEM6-K	9.10	9.0	15.0	10.0	0.5	1.0-4.0
M8X1.25	SEM8/SEM8-K	11.10	11.0	16.0	12.0	0.5	1.0-4.0
M10X1.5	SEM10/SEM10-K	13.10	13.0	18.6	14.0	0.5	1.0-4.0
THREAD SIZE	PART NO.	HOLE SIZE +0.1/-0.0	D(mm) +0.0/-0.1	L(mm) ±0.4	A(mm) ±0.3	H(mm) +0.15/-0.05	GRIP RANGE
M3X0.5	SAM3	4.9	4.8	9.0	5.8	0.5	0.5-2.0
M4X0.7	SAM4/SAM4-K	6.4	6.3	10.0	7.3	0.5	0.5-2.5
M5X0.8	SAM5/SAM5-K	7.2	7.1	12.0	8.1	0.5	0.5-2.5
M6X1.0	SAM6/SAM6-K	9.6	9.5	15.0	10.5	0.5	1.0-4.0
M8X1.25	SAM8/SAM8-K	10.6	10.5	16.0	11.5	0.5	1.0-4.0
M10X1.5	SAM10/SAM10-K	12.8	12.7	18.6	13.7	0.5	1.0-4.0
THREAD SIZE	PART NO.	HOLE SIZE +0.004/-0.0	D(inch) +0.0/-0.004	L(inch) ±0.015	A(inch) ±0.012	H(inch) +0.006/-0.002	GRIP RANGE
UNC 4-40	SAI3	.192	.188	.355	.228	.02	0.02-0.08
UNC 6-32	SAI4-632/SAI4-632	.253	.249	.409	.289	.02	0.02-0.10
UNC 8-32	SAI4-832/SAI4-832K	.253	.249	.409	.289	.02	0.02-0.10
UNC 10-24	SAI5-1024/SAI5-1024K	.284	.280	.464	.320	.02	0.02-0.10
UNC 10-32	SAI5-1032/SAI5-1032K	.284	.280	.464	.320	.02	0.02-0.10
UNC 6-32	SAI6/SAI6-K	.378	.374	.575	.414	.02	0.04-0.15
UNC 4-40	SAI8/SAI8-K	.420	.414	.630	.456	.02	0.04-0.15
UNC 6-32	SAI10/SAI10-K	.504	.500	.708	.540	.02	0.04-0.16



FLAT HEAD BERYNUT, OPEN END

BEM, BAI SERIES

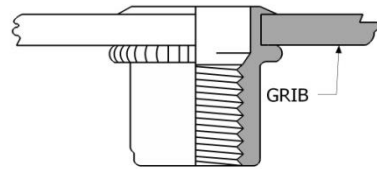
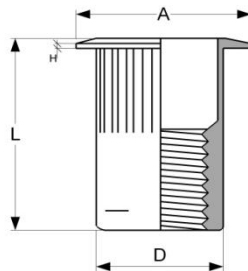
THREAD SIZE	PART NO.	HOLE SIZE +0.1/-0.0	D(mm) +0.0/-0.1	L(mm) ±0.4	A(mm) ±0.3	H(mm) +0.15/-0.05	GRIP RANGE
M3X0.5	BEM3	5.10	5.0	9.8	8.0	0.8	0.5-2.0
M4X0.7	BEM4/BEM4-K	6.10	6.0	11.3	9.0	0.8	0.5-2.5
M5X0.8	BEM5/BEM5-K	7.10	7.0	12.5	10.0	1.0	0.5-2.5
M6X1.0	BEM6/BEM6-K	9.10	9.0	16.0	13.0	1.5	1.0-4.0
M8X1.25	BEM8/BEM8-K	11.10	11.0	18.0	14.5	1.5	1.0-4.0
M10X1.5	BEM10/BEM10-K	13.10	13.0	21.6	16.0	1.6	1.0-4.0
THREAD SIZE	PART NO.	HOLE SIZE +0.004/-0.0	D(inch) +0.0/-0.004	L(inch) ±0.015	A(inch) ±0.012	H(inch) +0.006/-0.002	GRIP RANGE
UNC 4-40	BAI3	.201	.197	.386	.315	.032	0.02-0.08
UNC 8-32	BAI4/BAI4-K	.240	.236	.445	.354	.032	0.02-0.10
UNC 10-24	BAI5/BAI5-K	.280	.276	.493	.393	.040	0.02-0.10
UNC 1/4-20	BAI6/BAI6-K	.358	.354	.630	.512	.059	0.04-0.15
UNC 5/16-18	BAI8/BAI8-K	.437	.433	.709	.571	.059	0.04-0.16
UNC 3/8-16	BAI10/BAI10-K	.516	.512	.850	.630	.063	0.04-0.16



SMALL FLANGE, SPLINED BERY NUT

TSSS SERIES

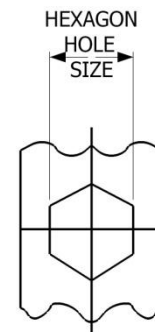
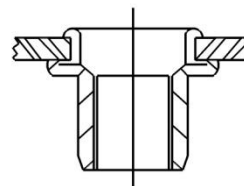
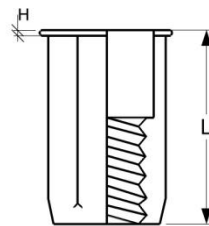
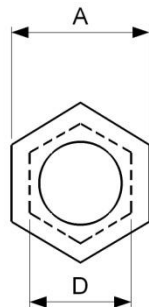
THREAD SIZE	PART NO.	HOLE SIZE +0.1/-0.0	D(mm) +0.0/-0.1	L(mm) ±0.4	A(mm) ±0.3	H(mm) +0.15/-0.05	GRIP RANGE
M4X0.7	TSSS470	6.8	6.75	11.45	7.87	0.48	0.5-2.0
M5X0.8	TSSS580	7.6	7.55	12.85	8.64	0.48	0.5-3.3
M6X1.0	TSSS610	10.0	9.90	15.50	11.50	0.55	0.7-4.0
M8X1.25	TSSS8125	13.5	13.45	18.30	15.11	0.55	0.7-4.0
M10X1.5	TSSS1015	13.5	13.45	18.30	15.11	0.55	0.7-4.0
THREAD SIZE	PART NO.	HOLE SIZE +0.004/-0.0	D(inch) +0.0/-0.004	L(inch) ±0.015	A(inch) ±0.012	H(inch) +0.006/-0.002	GRIP RANGE
UNC 6-32	TSSS632	.266	.265	.450	.295	.019	0.02-0.08
UNC 8-32	TSSS832	.266	.265	.450	.295	.019	0.02-0.08
UNC 10-24	TSSS1024	.297	.296	.505	.326	.019	0.02-0.13
UNC 10-32	TSSS1032	.297	.296	.505	.326	.019	0.02-0.13
UNC 1/4-20	TSSS420	.391	.390	.610	.420	.022	0.027-0.150
UNC 5/16-18	TSSS518	.531	.530	.720	.560	.022	0.027-0.150
UNC 3/8-16	TSSS616	.531	.530	.720	.560	.022	0.027-0.150



LARGE FLANGE, SPLINED BERY NUT

TSBS SERIES

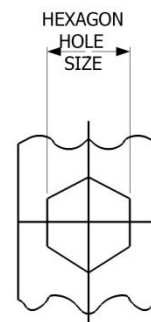
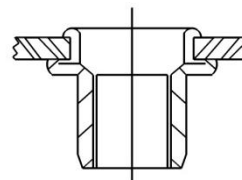
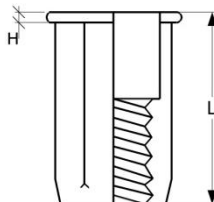
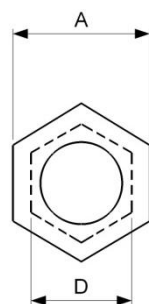
THREAD SIZE	PART NO.	HOLE SIZE +0.1/-0.0	D(mm) +0.0/-0.1	L(mm) ±0.4	A(mm) ±0.3	H(mm) +0.15/-0.05	GRIP RANGE
M4X0.7	TSBS470	6.8	6.75	11.70	9.50	0.76	0.5-2.0
M5X0.8	TSBS580	7.6	7.55	13.10	10.10	0.76	0.5-3.3
M6X1.0	TSBS610	10.0	9.90	15.75	12.70	0.76	0.7-4.0
M8X1.25	TSBS8125	13.5	13.45	18.65	17.00	0.89	0.7-4.0
M10X1.5	TSBS1015	13.5	13.45	18.65	17.00	0.89	0.7-4.0
THREAD SIZE	PART NO.	HOLE SIZE +0.004/-0.0	D(inch) +0.0/-0.004	L(inch) ±0.015	A(inch) ±0.012	H(inch) +0.006/-0.002	GRIP RANGE
UNC 6-32	TSBS632	.266	.265	.460	.375	0.3	0.02-0.08
UNC 8-32	TSBS832	.266	.265	.460	.375	0.3	0.02-0.08
UNC 10-24	TSBS1024	.297	.296	.515	.400	0.3	0.02-0.13
UNC 10-32	TSBS1032	.297	.296	.515	.400	0.3	0.02-0.13
UNC 1/4-20	TSBS420	.391	.390	.620	.500	0.3	0.027-0.150
UNC 5/16-18	TSBS518	.531	.530	.735	.670	0.35	0.027-0.150
UNC 3/8-16	TSBS616	.531	.530	.735	.670	0.35	0.027-0.150



**FULL-HEXAGON WITH SMALL FLANGE BERYNUT
HEX FLANGE, ROUND INTERNAL HOLE, OPEN END**

FHSM, FHSI SERIES

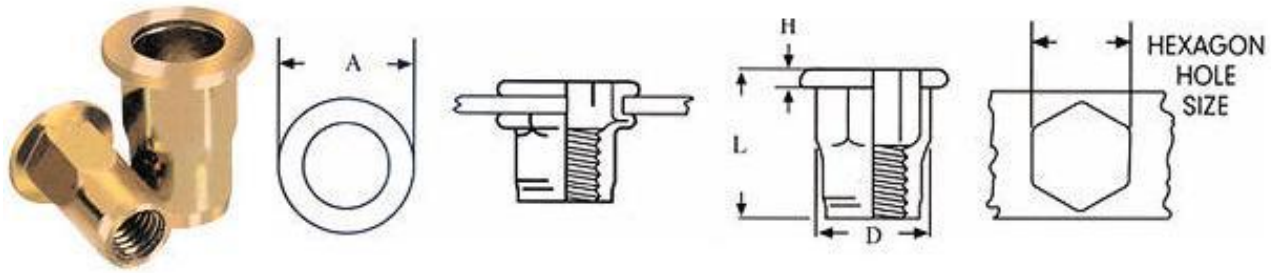
THREAD SIZE	PART NO.	HOLE SIZE +0.1/-0.0	D(mm) +0.0/-0.1	L(mm) +/-0.4	A(mm) +/-0.3	H(mm) +0.15/-0.05	GRIP RANGE
M4X0.7	FHSM4	6.1	5.9	10.2	6.9	0.5	0.5-2.5
M5X0.8	FHSM5	7.1	6.9	12.0	7.8	0.5	0.5-3.0
M6X1.0	FHSM6	9.1	8.9	15.2	10.0	0.5	0.5-3.3
M8X1.25	FHSM8	11.1	10.9	17.8	12.0	0.6	0.5-3.3
M10X1.5	FHSM10	13.1	12.9	21.0	14.6	0.8	0.5-3.5
THREAD SIZE	PART NO.	HOLE SIZE +0.004/-0.0	D(inch) +0.0/-0.004	L(inch) ±0.015	A(inch) ±0.012	H(inch) +0.006 / -0.002	GRIP RANGE
UNC 8-32	FHSI 832	.240	.232	.402	.272	.02	0.02-0.098
UNC10-24	FHSI1024	.280	.272	.472	.307	.02	0.02-0.118
UNC 1/4-20	FHSI 420	.358	.350	.598	.394	.02	0.02-0.130
UNC 5/16-18	FHSI 518	.437	.429	.701	.472	.024	0.02-0.130
UNC 3/8-16	FHSI 616	.516	.508	.827	.575	.031	0.02-0.138



**FULL-HEXAGON WITH BIG FLANGE BERYNUT
FLAT HEAD, ROUND INTERNAL HOLE, OPEN END**

FHBM, FHBI SERIES

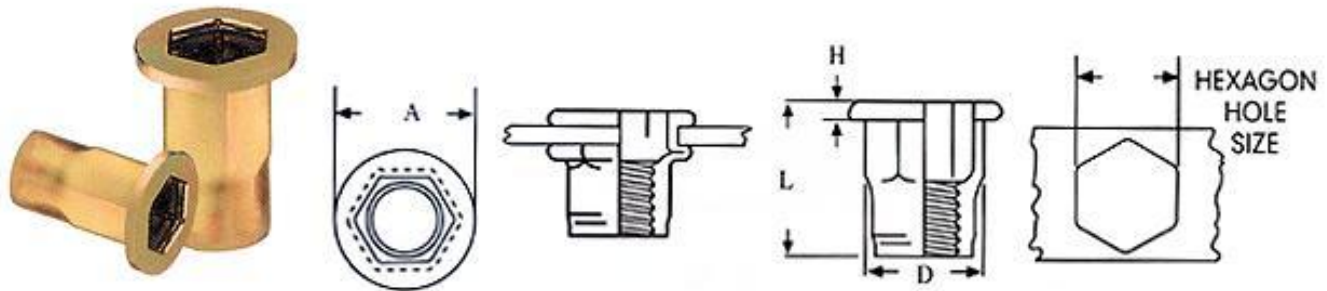
THREAD SIZE	PART NO.	HOLE SIZE +0.1/-0.0	D(mm) +0.0/-0.1	L(mm) ±0.4	A(mm) ±0.3	H(mm) +0.15/-0.05	GRIP RANGE
M4X0.7	FHBM4	6.1	5.9	10.7	9.0	0.9	0.5-2.5
M5X0.8	FHBM5	7.1	6.9	13.7	10.0	0.9	0.5-3.0
M6X1.0	FHBM6	9.1	8.9	16.0	13.0	1.5	0.5-3.3
M8X1.25	FHBM8	11.1	10.9	18.0	16.0	1.5	0.5-3.3
M10X1.5	FHBM10	13.1	12.9	21.0	19.0	2.0	0.5-3.5
THREAD SIZE	PART NO.	HOLE SIZE +0.004/-0.0	D(inch) +0.0/-0.004	L(inch) ±0.015	A(inch) ±0.012	H(inch) +0.006/-0.002	GRIP RANGE
UNC 8-32	FHBI832	.240	.232	.421	.354	.035	0.02-0.098
UNC10-24	FHBI1024	.280	.272	.539	.394	.035	0.02-0.118
UNC 1/4-20	FHBI420	.358	.350	.630	.512	.059	0.02-0.130
UNC 5/16-18	FHBI518	.437	.429	.709	.630	.059	0.02-0.130
UNC 3/8-16	FHBI616	.516	.508	.827	.748	.079	0.02-0.138



**HALF-HEXAGON WITH BIG FLANGE BERYNUT
FLAT HEAD, ROUND INTERNAL HOLE, OPEN END**

HBM, HBI SERIES

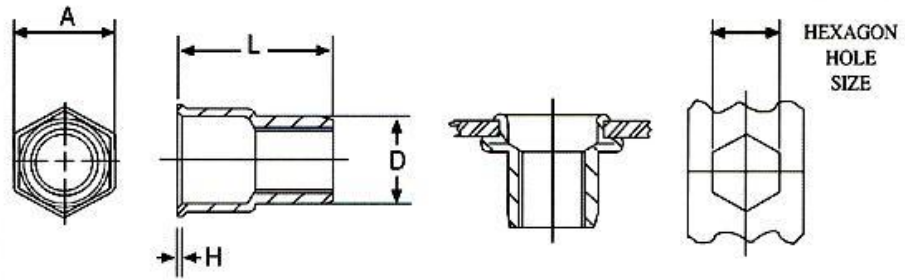
THREAD SIZE	PART NO.	HOLE SIZE +0.1 / -0.0	D(mm) +0.0 / -0.1	L(mm) ±0.4	A(mm) ±0.3	H(mm) +0.15/-0.05	GRIP RANGE
M4X0.7	HBM4	6.1	5.9	10.7	9.0	0.9	0.5-2.5
M5X0.8	HBM5	7.1	6.9	13.2	10.0	0.9	0.5-3.0
M6X1.0	HBM6	9.1	8.9	16.0	13.0	1.5	0.5-3.3
M8X1.25	HBM8	11.1	10.9	18.0	16.0	1.5	0.5-3.3
M10X1.5	HBM10	13.1	12.9	21.0	19.0	2.0	0.5-3.5
THREAD SIZE	PART NO.	HOLE SIZE +0.004 / -0.0	D(inch) +0.0 / -0.004	L(inch) ±0.015	A(inch) ±0.012	H(inch) +0.006/-0.002	GRIP RANGE
UNC 8-32	HBI832	.240	.232	.421	.354	.035	0.02-0.098
UNC10-24	HBI1024	.280	.272	.520	.394	.040	0.02-0.118
UNC 1/4-20	HBI420	.358	.350	.630	.512	.059	0.02-0.130
UNC 5/16-18	HBI518	.437	.429	.709	.630	.059	0.02-0.130
UNC 3/8-16	HBI616	.516	.508	.827	.748	.079	0.02-0.138



**HALF-HEXAGON WITH BIG FLANGE BERYNUT
FLAT HEAD, HEX INTERNAL HOLE, OPEN END**

AHBM, AHBI SERIES

THREAD SIZE	PART NO.	HOLE SIZE +0.1/-0.0	D(mm) +0.0/-0.1	L(mm) ±0.4	A(mm) ±0.3	H(mm) +0.15/-0.05	GRIP RANGE
M4X0.7	AHBM4	6.35	6.25	10.5	9.5	0.68	0.5-2.5
M5X0.8	AHBM5	7.20	7.0	11.6	9.9	0.68	0.5-3.3
M6X1.0	AHBM6	9.60	9.4	15.4	12.9	0.76	0.5-3.5
M8X1.25	AHBM8	12.70	12.6	18.4	16.5	0.89	0.5-3.8
M10X1.5	AHBM10	12.70	12.6	18.4	16.5	0.89	0.5-3.8
THREAD SIZE	PART NO.	HOLE SIZE +0.004/-0.0	D(inch) +0.0/-0.004	L(inch) ±0.015	A(inch) ±0.012	H(inch) +0.006/-0.002	GRIP RANGE
UNC 8-32	AHBI832	.250	.246	.413	.374	.027	0.02-0.008
UNC10-24	AHBI1024	.280	.276	.457	.390	.027	0.02-0.130
UNC10-32	AHBI1032	.280	.276	.457	.390	.027	0.02-0.130
UNC 1/4-20	AHBI420	.378	.370	.606	.508	.030	0.027-0.165
UNC 5/16-18	AHBI518	.500	.496	.724	.650	.035	0.027-0.150
UNC 3/8-16	AHBI616	.500	.496	.724	.650	.035	0.027-0.150

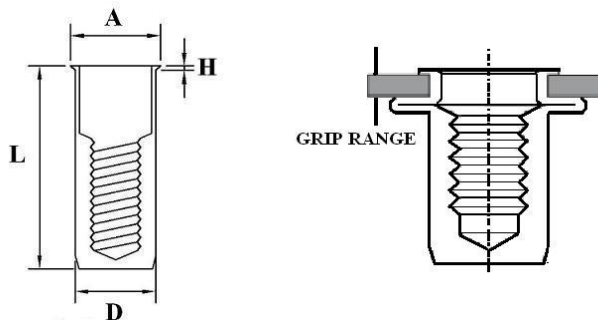


**HALF-HEXAGON WITH SMALL FLANGE BERYNUT
HEX FLANGE, HEX INTERNAL HOLE, OPEN END**

HSM, HSI SERIES

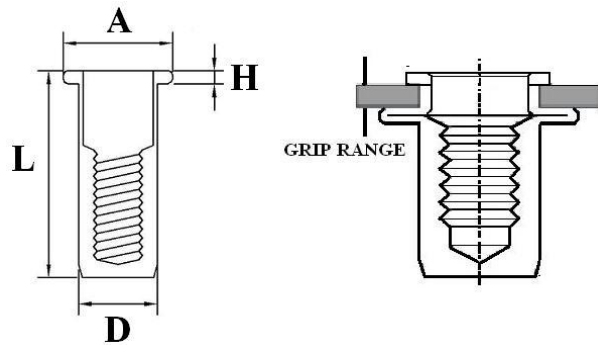
THREAD SIZE	PART NO.	HOLE SIZE +0.1/-0.0	D(mm) +0.0/-0.1	L(mm) ±0.4	A(mm) ±0.3	H(mm) +0.15/-0.05	GRIP RANGE
M4X0.7	HSM4	6.45	6.35	10.4	7.0	0.4	0.5-2.0
M5X0.8	HSM5	7.20	7.1	11.8	8.0	0.6	0.5-3.0
M6X1.0	HSM6	9.60	9.5	14.6	10.6	0.6	0.5-3.0
M8X1.25	HSM8	10.60	10.5	16.0	11.5	0.6	0.5-3.5
M10X1.5	HSM10	12.70	12.6	18.5	14.0	0.6	0.7-3.8
THREAD SIZE	PART NO.	HOLE SIZE +0.004/-0.0	D(inch) +0.0/-0.004	L(inch) ±0.015	A(inch) ±0.012	H(inch) +0.006/-0.002	GRIP RANGE
UNC 8-32	HSI 832	.254	.250	.409	.376	.016	0.02-0.079
UNC 10-24	HSI 1024	.280	.279	.465	.315	.024	0.02-0.118
UNC 1/4-20	HSI 420	.378	.374	.575	.417	.024	0.02-0.118
UNC 5/16-18	HSI 518	.417	.413	.630	.453	.024	0.02-0.138
UNC 3/8-16	HSI 616	.500	.496	.728	.551	.024	0.028-0.150

BLIND RIVET NUT- WATERPROOF



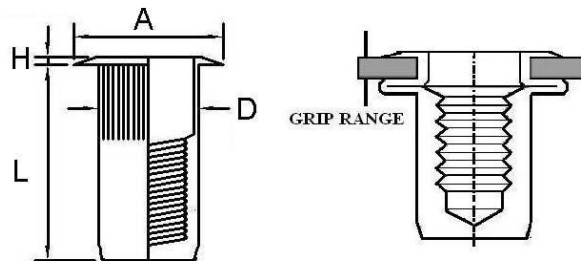
SMALL FLANGE BERYNUT, CLOSED END/ SAM, SAI SERIES

THREAD SIZE	PART NO.	HOLE SIZE +0.1 / -0.0	D(mm) +0.0 / -0.1	L(mm) ±0.4	A(mm) ±0.3	H(mm) +0.15/-0.05	GRIP RANGE
M4X0.7	SAM4-C/SAM4(K)-C	6.4	6.3	14.90	7.3	0.5	0.5-2.5
M5X0.8	SAM5-C/SAM5(K)-C	7.2	7.1	20.20	8.1	0.5	0.5-2.5
M6X1.0	SAM6-C/SAM6(K)-C	9.6	9.5	23.40	10.5	0.5	1.0-4.0
M8X1.25	SAM8-C/SAM8(K)-C	10.6	10.5	23.60	11.5	0.5	1.0-4.0
M10X1.5	SAM10-C/SAM10(K)-C	12.8	12.7	28.20	13.7	0.5	1.0-4.0
THREAD SIZE	PART NO.	HOLE SIZE +0.004/-0.0	D(inch) +0.0/-0.004	L(inch) ±0.015	A(inch) ±0.012	H(inch) +0.006/-0.002	GRIP RANGE
UNC 6-32 UNC 8-32	SAI4-632-C/SAI4-632(K)-C SAI4-832-C/SAI4-832(K)-C	0.253	0.249	0.59	0.289	0.02	0.02-0.10
UNC 10-24 UNC 10-32	SAI5-1024-C/SAI5-1024(K)-C SAI5-1032-C/SAI5-1032(K)-C	0.284	0.280	0.80	0.320	0.02	0.02-0.10
UNC 1/4-20	SAI6-C/SAI6(K)-C	0.378	0.374	0.92	0.414	0.02	0.04-0.15
UNC 5/16-18	SAI8-C/SAI8(K)-C	0.420	0.414	0.93	0.456	0.02	0.04-0.15
UNC 3/8-16	SAI10-C/SAI10(K)-C	0.504	0.500	1.11	0.540	0.02	0.04-0.15



FLAT HEAD BERYNUT, CLOSED END/ BEM, BAI SERIES

THREAD SIZE	PART NO.	HOLE SIZE +0.1 / -0.0	D(mm) +0.0 / -0.1	L(mm) ±0.4	A(mm) ±0.3	H(mm) +0.15/-0.05	GRIP RANGE
M4X0.7	BEM4-C/BEM4(K)-C	6.1	6.0	16.60	9.0	0.8	0.5-2.5
M5X0.8	BEM5-C/BEM5(K)-C	7.1	7.0	17.50	10.0	1.0	0.5-2.5
M6X1.0	BEM6-C/BEM6(K)-C	9.1	9.0	22.40	13.0	1.5	1.0-3.5
M8X1.25	BEM8-C/BEM8(K)-C	11.1	11.0	27.00	14.5	1.5	1.0-4.0
M10X1.5	BEN10-C/BEM10(K)-C	13.1	13.0	31.20	16.0	1.6	1.0-4.0
THREAD SIZE	PART NO.	HOLE SIZE +0.004/-0.0	D(inch) +0.0/-0.004	L(inch) ±0.015	A(inch) ±0.012	H(inch) +0.006/-0.002	GRIP RANGE
UNC 6-32 UNC 8-32	SAI4-632-C/SAI4-632(K)-C SAI4-832-C/SAI4-832(K)-C	0.253	0.249	0.59	0.289	0.02	0.02-0.10
UNC 10-24 UNC 10-32	SAI5-1024-C/SAI5-1024(K)-C SAI5-1032-C/SAI5-1032(K)-C	0.284	0.280	0.80	0.320	0.02	0.02-0.10
UNC 1/4-20	SAI6-C/SAI6(K)-C	0.378	0.374	0.92	0.414	0.02	0.04-0.15
UNC 5/16-18	SAI8-C/SAI8(K)-C	0.420	0.414	0.93	0.456	0.02	0.04-0.15
UNC 3/8-16	SAI10-C/SAI10(K)-C	0.504	0.500	1.11	0.540	0.02	0.04-0.15

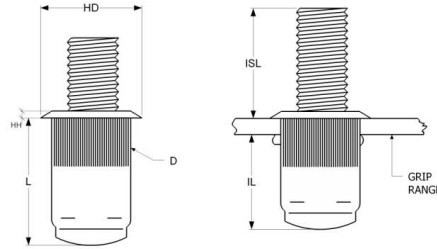


LARGE FLANGE SPLINED BERYNUT, CLOSED END/ TSBS SERIES

THREAD SIZE	PART NO.	HOLE SIZE +0.004/-0.0	D(inch) +0.0/-0.004	L(inch) ±0.015	A(inch) ±0.012	H(inch) +0.006/-0.002	GRIP RANGE
UNC 6-32	TSBS632-C	.266	.265	0.74	.375	.03	0.02-0.08
UNC 8-32	TSBS832-C	.266	.265	0.74	.375	.03	0.02-0.08
UNC 10-24	TSBS1024-C	.297	.296	0.99	.400	.03	0.02-0.13
UNC 10-32	TSBS1032-C	.297	.296	0.99	.400	.03	0.02-0.13
UNC 1/4-20	TSBS420-C	.391	.390	1.19	.500	.03	0.027-0.150
UNC 5/16-18	TSBS518-C	.531	.530	1.39	.670	.035	0.027-0.150
UNC 3/8-16	TSBS616-C	.531	.530	1.39	.670	.035	0.027-0.150

- MATERIAL: STEEL/ STAINLESS STEEL/ ALUMINUM
 - FINISHED: ACCORDING TO CUSTOMER REQUEST
 - OTHER SIZE, MATERIALS ARE AVAILABLE UPON REQUEST

THE BLIND RIVER NUT OFFERS THE FOLLOWING ADVANTAGES:
 -EASY & FAST INSTALLATION
 -HIGH TORQUE & STRONG THREADS ARE COMPARABLE TO NORMAL FASTENERS



ISL (INSTALLED STUD DIMENSION) IS BASED ON MAX. GRIP INSTALLATION.

TO CALCULATE THE ACTUAL ISL IN A SPECIFIC GRIP, PLEASE REFER TO THE FORMULA BELOW:

$$\text{MAX.GRIP} - \text{ACTUAL GRIP} = \text{GRIP DIFFERENCE.}$$

$$\text{ISL} + \text{GRIP DIFFERENCE} = \text{ACTUAL ISL}$$

BOLT (SCREW) RIVET NUT IN ISO DIMENSION (MM)

PART NUMBER	THREAD ISO	GRIP RANGE (MM)	HOLE SIZE E +0,15 -0,00	HD ±0,25 ±.064*	HH ±0,08	L ±0,50	D MAX.	IL MAX.	STUD LENGTHS MIN.			TOOL RPM	DYNAMIC AIR PRESSURE SETTINGS BARS
									ISL CALL OUT				
TSBS 470-B	M4X0,7	0,50-2,00	6,75	9,91	0,76	12,3 2	6,73	9,15	12,0	15,0	20,0	3000	4.8 - 5.5
									10,7	15	20		
TSBS 470-BL	M4X0,7	2,00-3,30	6,75	9,91	0,76	13,5 9	6,73	9,15	10,7	13,7	18,7	3000	4.8 - 5.5
									10,7	13,7	18,7		
TSBS 580-B	M5X0,8	0,50-3,30	7,60	10,54	0,76	13,8 4	7,52	9,65	12,0	15,0	20,0	1500	4.1 - 5.5
									12	15	20		
TSBS 580-BL	M5X0,8	3,30-5,70	7,60	10,54	0,76	16,6 4	7,52	9,65	9,6	12,6	17,6	150	4.1 - 5.5
									9,66	12,6	17,6		
TSBS 610-B	M6X1,0	0,70-4,20	10,00	12,70	0,76	17,0 2	9,91	11,81	15,0	20,0	25,0	900	5.5 - 6.2
									15	20	25		
TSBS 610-BL	M6X1,0	4,20-6,60	10,00	12,70	0,76	19,5 6	9,91	11,81	12,6	17,6	22,6	900	5.5 - 6.2
									12,6	17,6	22,6		
TSBS 8125-B	M8X1,25	0,70-3,8	13,50	17,40*	0,89	20,5 7	13,46	14,10	16,0	22,0	28,0	600	5.5 - 7.5
									16	22	28		
TSBS 8125-BL	M8X1,25	3,8-7,90	13,50	17,40*	0,89	23,5 0	13,46	12,96	11,9	17,9	23,9	600	5.5 - 7.5
									11,9	17,9	23,9		
TSBS 1015-B	M10X1,5	0,70-3,8	13,50	17,40*	0,89	20,5 7	13,46	14,10	20,0	25,0	30,0	600	5.5 - 7.5
									20	25	30		
TSBS 1015-BL	M10X1,5	3,8-7,90	13,50	17,40*	0,89	23,5 0	13,46	12,96	15,9	20,9	25,9	600	5.5 - 7.5
									15,9	20,9	25,9		

BOLT (SCREW) RIVET NUT IN NUC DIMENSION (INCH)

PART NUMBER	THREAD UNC	GRIP RANGE (INCH)	HOLE SIZE +.006" -.000"	HD ±.010 ±.025*	HH ±.003	L ±.020	D MAX.	IL MAX.	STUD LENGTHS MIN.			TOOL RPM	DYNAMIC AIR PRESSURE SETTINGS PSI
									ISL CALL OUT				
TSBS632-B	6-32	.020-.080	17/64(.2656)	.390	.030	.485	.265	.360	.500	.625	.750	3000	70 - 80
									500	625	750		
TSBS632-BL	6-32	.080-.130	17/64(.2656)	.390	.030	.535	.265	.360	.450	.575	.700	3000	70 - 80
									450	575	700		
TSBS832-B	8-32	.020-.080	17/64(.2656)	.390	.030	.485	.265	.360	.500	.625	.750	3000	75 - 90
									500	625	750		
TSBS832-BL	8-32	.080-.130	17/64(.2656)	.390	.030	.535	.265	.360	.450	.575	.700	3000	75 - 90
									450	575	700		
TSBS1024-B	10-24	.020-.130	19/64(.2969)	.415	.030	.545	.296	.380	.500	.625	.750	1500	60 - 80
									500	625	750		
TSBS1024-BL	10-24	.130-.225	19/64(.2969)	.415	.030	.655	.296	.380	.405	.530	.655	1500	60 - 80
									405	530	655		
TSBS1032-B	10-32	.020-.130	19/64(.2969)	.415	.030	.545	.296	.380	.500	.625	.750	1500	60 - 80
									500	625	750		
TSBS1032-BL	10-32	.130-.225	19/64(.2969)	.415	.030	.655	.296	.380	.405	.530	.655	1500	60 - 80
									405	530	655		
TSBS420-B	1/4-20	.027-.165	25/64(.3906)	.500	.030	.670	.390	.465	.625	.8125	1.000	900	70 - 90
									625	8125	1000		
TSBS420-BL	1/4-20	.165-.260	25/64(.3906)	.500	.030	.770	.390	.465	.530	.7175	.905	900	70 - 90
									530	7175	905		
TSBS518-B	5/16-18	.027-.150	17/32(.5312)	.685*	.035	.810	.530	.555	.625	.875	1.125	600	80 - 110
									625	875	1125		
TSBS518-BL	5/16-18	.150-.312	17/32(.5312)	.685*	.035	.925	.530	.510	.463	.713	.963	600	80 - 110
									463	713	963		
TSBS616-B	3/8-16	.027-.150	17/32(.5312)	.685*	.035	.810	.530	.555	.750	1.000	1.250	600	80 - 110
									750	1000	1250		
TSBS616-BL	3/8-16	.150-.312	17/32(.5312)	.685*	.035	.925	.530	.510	.588	.838	1.088	600	80 - 110
									588	838	1088		

